



DMfit®

Push-in tube fittings



DM DMT
www.dmfitt.com

DM Filter

■ Features

- With superb durability and purifying power, DMfilter enables a water purifier system which offers purest water.
- As DMfilter is applied to the tube connection, it is compatible with tubes from other manufacturers.
- Color may be chosen from among gray, white and black.
- For the purpose of cleaning, the cover is separable from the body.
- If chemical liquids are to be used, except water, food and beverage, be careful and selective in using this valve. For such liquids, refer to the Chemical Property or consult us.
- Do not apply strong vibration, rotation, body pulling, twisting, bending, shock and other loads to the filter. The filter body may be damaged or clogs may be dislocated.

■ Maximum Pressures and Temperatures

Standard Items	1/4 6mm	3/16 5mm	3/8 10mm
Water pressure (psi)	170		
Temperature	-20F(-29C) ~ +185F(85C)		

① The above data is based on the use of DM filter at room temperature.
② If the filter is to be used at other temperatures or pressures than above, consult us.

■ Filter Materials and Types

Mesh type	100 Mesh	150 Mesh	200 Mesh
Material	SUS304		

① Currently, filters are made with 100 mesh.
② 150 and 200 meshes are optional.

■ Inch Size

PART NO.	IN	OUT
A4DMF4	1/4	1/4
A5DMF4	5/16	1/4
A5DMF5	5/16	5/16
A6DMF4	3/8	1/4
A6DMF5	3/8	5/16
A6DMF6	3/8	3/8

■ Metric Size

PART NO.	IN	OUT
A6DMF6M	6	6
A8DMF6M	8	6
A8DMF8M	8	8
A10DMF6M	10	6
A10DMF8M	10	8
A10DMF10M	10	10



P.E. Tube



■ Max. Pressure and Temperature of P.E. Tube

Items	Standard		1/4"		3/8"		1-2"	
	5/23" 4mm	3/16" 5mm	6mm	8mm	10mm	12mm		
Water pressure (psi)	230				170			
Temperature	-20F(-29C) ~ +185F(85C)							

① The above data is based on PE tube that is used with DMfilter at room temperature.
② If the tube is to be used at other temperatures or pressures than above, consult us.

- Various colors shown in the table make a better choice for applications.
- Suitable for water purification, water conditioning & misting systems.
- Benefits in temperature & pressure range.
- Suitable for other fittings as well as DMfilter.

■ Inch Size

SIZE	Outer Diameter	Inner Diameter	Packaging Units	Colors
5/32"	0.156	0.098	1840ft (500m)	Blue Orange
3/16"	0.188	0.118	1312ft (400m)	White Black
1/4"	0.25	0.163	301, 100ft (30m)	Yellow Translucent Gray
5/16"	0.313	0.206	656ft (200m)	
3/8"	0.375	0.236	496ft (150m)	
1/2"	0.5	0.335	326ft (100m)	

■ Metric Size

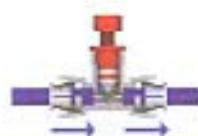
SIZE	Outer Diameter	Inner Diameter	Packaging Units	Colors
4mm	4	2.5	500m	Blue Orange
5mm	5	3.5	400m	White Black
6mm	6	4	300m	Yellow Translucent Gray
8mm	8	5	200m	
10mm	10	6.5	150m	
12mm	12	8	100m	

Valves [Inch / Metric Size]

Control Valve

■ Features

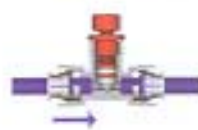
- High durable and resistant to pressure.
- If chemical liquids are to be used, except water, food and beverage, be careful and selective in using the valve.
For such liquids, refer to the Chemical Property or consult us.
- Do not apply strong vibration, rotation, body pulling, twisting, other loads to the fittings. The valve body may be damaged or collets may be dislocated.



① With gradual flow control minute regulation is possible.

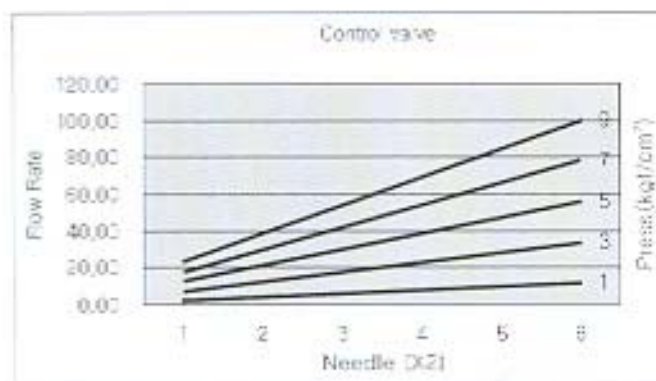


② With the use of the lock nut, a uniform supply of flow is possible when the handle is fixed.



③ Opening and closing are possible.

■ Flow Rate Per Rotation



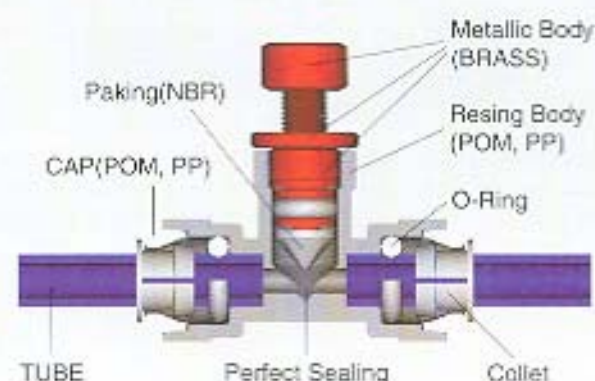
* The above data may be changed depending on the time and temperature variations.

CVEU-Control Valve Elbow Union



PART NO.	Tube O.D.
A4CVEU4	1/4
PART NO.	Tube O.D. (mm)
A6CVEU6M	6

■ Construction



CVUC-Control Valve Union Elbow



PART NO.	Tube O.D.
A4CVUC4	1/4
A6CVUC6	3/8
PART NO.	Tube O.D. (mm)
A6CVUC6M	6
A10CVUC10M	10

CVFA-Control Valve Female Adapter



PART NO.	Tube O.D.	NPT Thread
A4CVFA4	1/4	1/4
A6CVFA6	3/8	3/8
PART NO.	Tube O.D. (mm)	PT Thread
A6CVFA6M	6	1/4
A10CVFA6M	10	3/8

CVMC-Control Valve Male Connector



PART NO.	Tube O.D.	NPT Thread
A4CVMC4	1/4	1/4
A6CVMC6	3/8	3/8
PART NO.	Tube O.D. (mm)	PT Thread
A6CVMC4M	6	1/4
A10CVMC6M	10	3/8

UC-Union Connector

PART NO.	Tube O.D.
A1UC1	5/32
A3UC3	3/16
A4UC4	1/4
A4UC5	1/4x5/16
A5UC3	5/16x3/16
A5UC5	5/16
A6UC3	3/8x3/16
A6UC4	3/8x1/4
A6UC5	3/8x5/16
A6UC6	3/8
A7UC5	1/2x5/16
A7UC6	1/2x3/8
A7UC7	1/2

CR-Cross

PART NO.	Tube O.D.
A1CR1	5/32
A4CR4	1/4
A5CR5	5/16
A6CR6	3/8
A7C7	1/2

OC-Offset Connector

PART NO.	Tube O.D.
A6OC4	3/8 x 1/4
A7OC5	1/2 x 5/16

MTS-Male Tee Swivel

PART NO.	Tube O.D.	NPT Thread
A1MTS2	5/32	1/8
A1MTS4	5/32	1/4
A3MTS2	3/16	1/8
A4MTS2	1/4	1/8
A4MTS4	1/4	1/4
A5MTS2	5/16	1/8
A5MTS4	5/16	1/4
A5MTS6	5/16	3/8
A6MTS4	3/8	1/4
A6MTS6	3/8	3/8
A7MTS6	1/2	3/8
A7MTS7	1/2	1/2

THWD-Three Way Divider

PART NO.	Tube O.D.
A6THWD4	3/8 x 1/4
A7THWD6	1/2 x 3/8

U-Bend

PART NO.	Tube O.D.
A4UB4	1/4
A5UB5	5/16
A6UB6	3/8
A7UB7	1/2

TWD-Two Way Divider

PART NO.	Tube In	Tube out	Tube out
A1TWD1	5/32	5/32	5/32
A4TWD4	1/4	1/4	1/4
A5TWD5	5/16	5/16	5/16
A5TWD5	3/8	5/16	5/16
A6TWD6	3/8	3/8	3/8
A7TWD7	1/2	1/2	1/2

TES-Tube End Stop

PART NO.	Tube O.D.
A4TES	1/4
A5TES	5/16
A6TES	3/8
A7TES	1/2

Acetal Fittings [Inch Size]

TU-Tee Union



PART NO.	Tube O.D. (FW)	Tube O.D. Stem
A1TU1	5/32	5/32
A3TU3	3/16	3/16
A4TU4	1/4	1/4
A5TU5	5/16	5/16
A6TU4	3/8	1/4
A6TU6	3/8	3/8
A7TU6	1/2	3/8
A7TU7	1/2	1/2

MRS-Male Run Swivel



PART NO.	Tube O.D.	NPTF Thread
A1MRS2	5/32	1/8
A1MRS4	5/32	1/4
A3MRS2	3/16	1/8
A4MRS2	1/4	1/8
A4MRS4	1/4	1/4
A5MRS2	5/16	1/8
A5MRS4	5/16	1/4
A5MRS6	5/16	3/8
A6MRS4	3/8	1/4
A6MRS6	3/8	3/8
A7MRS6	1/2	3/8
A7MRS7	1/2	1/2

SA-Stem Adapter



PART NO.	Tube O.D.	NPTF Thread
A1SA2	5/32	1/8
A1SA4	5/32	1/4
A3SA2	3/16	1/8
A4SA2	1/4	1/8
A4SA4	1/4	1/4
A5SA2	5/16	1/8
A5SA4	5/16	1/4
A5SA6	5/16	3/8
A6SA4	3/8	1/4
A6SA6	3/8	3/8
A7SA6	1/2	3/8
A7SA7	1/2	1/2

PL-Plug



PART NO.	Stem O.D.
A1PL	5/32
A3PL	3/16
A4PL	1/4
A5PL	5/16
A6PL	3/8
A7PL	1/2

TBC-Tube Barb Connector



PART NO.	Stem O.D.	Tube I.D.
A4TBC3	1/4	3/16
A4TBC4	1/4	1/4
A4TBC5	1/4	5/16
A5TBC3	5/16	3/16
A5TBC4	5/16	1/4
A5TBC5	5/16	5/16
A5TBC6	5/16	3/8
A6TBC4	3/8	1/4
A6TBC5	3/8	5/16
A6TBC6	3/8	3/8
A6TBC7	3/8	1/2
A7TBC6	1/2	3/8
A7TBC7	1/2	1/2

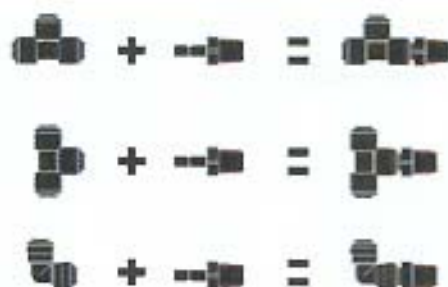
TEB-Tube Elbow Barb Connector



PART NO.	Stem O.D.	Tube I.D.
A4TEB4	1/4	1/4
A4TEB5	1/4	5/16
A5TEB4	5/16	1/4
A5TEB5	5/16	5/16
A6TEB4	3/8	1/4
A6TEB5	3/8	5/16

Adaptability

- Each product of DMfit may be combined into a new design.
- Unlike other products from our competitors, separation/reuse are easy.



ME-Male Elbow



PART NO.	Tube O.D	NPTF Thread
A4ME2	1/4	1/8
A4ME4	1/4	1/4
A4ME6	1/4	3/8
A6ME4	3/8	1/4
A6ME6	3/8	3/8

RD-Reducer



PART NO.	Stem O.D	Tube O.D
A3RD1	3/16	5/32
A3RD3	3/16	3/16
A5RD1	5/16	5/32
A5RD3	5/16	3/16
A5RD4	5/16	1/4
A6RD3	3/8	3/16
A6RD4	3/8	1/4
A6RD5	3/8	5/16
A7RD5	1/2	5/16
A7RD6	1/2	3/8

TEU-Tube Elbow Union



PART NO.	Tube O.D	Stem O.D
A1TEU1	5/32	5/32
A1TEU3	5/32	3/16
A3TEU1	3/16	5/32
A3TEU3	3/16	3/16
A4TEU4	1/4	1/4
A5TEU5	5/16	5/16
A4TEU6	1/4	3/8
A5TEU6	5/16	3/8
A6TEU6	3/8	3/8
A7TEU7	1/2	1/2

FA-Female Adapter NPTF Thread



PART NO.	Tube O.D	NPTF Thread
A4FA2	1/4	1/8
A4FA4	1/4	1/4
A6FA2	3/8	1/8
A6FA4	3/8	1/4

EU-Elbow Union



PART NO.	Tube O.D
A1EU1	5/32
A3EU3	3/16
A4EU4	1/4
A5EU4	5/16 x 1/4
A5EU1	5/16 x 5/32
A5EU3	5/16 x 3/16
A5EU5	5/16
A6EU3	3/8 x 3/16
A6EU4	3/8 x 1/4
A6EU5	3/8 x 5/16
A6EU6	3/8
A7EU6	1/2 x 3/8
A7EU7	1/2

FAB-Female Adapter BSP(P) Thread



PART NO.	Tube O.D	BSP(P) Thread
A4FAB7	1/4	1/2
A6FAB7	3/8	1/2

BU-Bulkhead Union



PART NO.	Tube O.D
A1BU1	5/32
A3BU3	3/16
A4BU4	1/4
A5BU5	5/16
A6BU4	3/8x1/4
A6BU6	3/8
A7BU7	1/2

FAU-Female Adapter UNS Thread



PART NO.	Tube O.D	UNS Thread
A4FAU7/16	1/4	7/16 - 24
A6FAU7/16	3/8	7/16 - 24

Acetal Fittings [Inch Size]



■ Features

- **Available for food :** DMfit is made of non-toxic, harmless materials that are approved by FDA, NSF-51, and SK Zert. DMfit products are used as part of the water purifications, water, food and beverage systems.
- **Workability :** DMfit is available in a quicker, more convenient and safer manner. This ISO9001 acknowledged system offers and maintains a very high quality standard. Defects are easily detectable and maintenance is easy with its easy dismantling for access.
- **Design :** The unique Colets design, based on the practicalism, is being applauded by the many customers from all over the world.
- **Application:** It can be readily used for inert gas, liquids and vacuum. It is proper for plastic and is repeatedly reusable. Also, as we offer various sizes for each model, the products have a broad scope of application.

MC-Male Connector

PART NO.	Tube O.D	NPTF Thread
A1MC2	5/32	1/8
A1MC4	5/32	1/4
A3MC2	3/16	1/8
A4MC2	1/4	1/8
A4MC4	1/4	1/4
A4MC6	1/4	3/8
A4MC7	1/4	1/2
A5MC2	5/16	1/8
A5MC4	5/16	1/4
A5MC6	5/16	3/8
A6MC2	3/8	1/8
A6MC4	3/8	1/4
A6MC6	3/8	3/8
A6MC7	3/8	1/2
A7MC6	1/2	3/8
A7MC7	1/2	1/2



MCBT-Male Connector BSPT Thread

PART NO.	Tube O.D	BSPT Thread
A1MCBT2	5/16	1/8
A1MCBT4	5/16	1/4
A3MCBT2	3/16	1/8
A3MCBT4	3/16	1/4
A4MCBT2	1/4	1/8
A4MCBT4	1/4	1/4
A4MCBT6	1/4	3/8
A4MCBT7	1/4	1/2
A5MCBT2	5/16	1/8
A5MCBT4	5/16	1/4
A5MCBT6	5/16	3/8
A6MCBT2	3/8	1/8
A6MCBT4	3/8	1/4
A6MCBT6	3/8	3/8
A6MCBT7	3/8	1/2
A7MCBT6	1/2	3/8
A7MCBT7	1/2	1/2



MCB-Male Connector BSP(P) Thread

PART NO.	Tube O.D	BSP(P) Thread
A1MCB2	5/32	1/8
A1MCB4	5/32	1/4
A3MCB2	3/16	1/8
A3MCB4	3/16	1/4
A4MCB2	1/4	1/8
A4MCB4	1/4	1/4
A5MCB2	5/16	1/8
A5MCB4	5/16	1/4
A5MCB6	5/16	3/8
A6MCB4	3/8	1/4
A6MCB6	3/8	3/8
A6MCB7	3/8	1/2
A7MCB6	1/2	3/8
A7MCB7	1/2	1/2



MES-Male Elbow Swivel

PART NO.	Tube O.D	NPTF Thread
A1MES2	5/32	1/8
A1MES4	5/32	1/4
A3MES2	3/16	1/8
A4MES2	1/4	1/8
A4MES4	1/4	1/4
A5MES2	5/16	1/8
A5MES4	5/16	1/4
A5MES6	5/16	3/8
A6MES4	3/8	1/4
A6MES6	3/8	3/8
A7MES6	1/2	3/8
A7MES7	1/2	1/2



●Max. Pressures and Temperatures

●DMfit

standards	5/23"	3/15"	1/4"	5/16"	3/8"	1/2"
Items	4mm	5mm	6mm	8mm	10mm	12mm
Water Pressure(ps)	230			170		
Temperatures	-20°F(-29°C) ~ +185°F(85°C)					

- The above values are based on the use of DMfit at room temperature.
- DMfit is to be used at a different temperature or pressure, contact and consult us.

●Maximum Torque

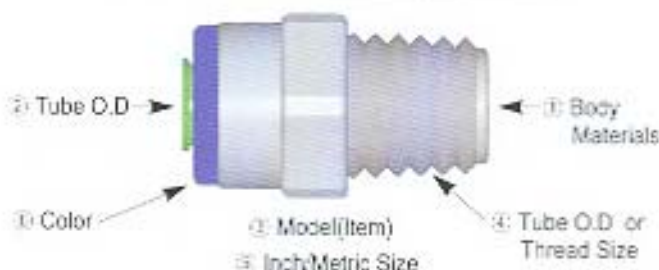
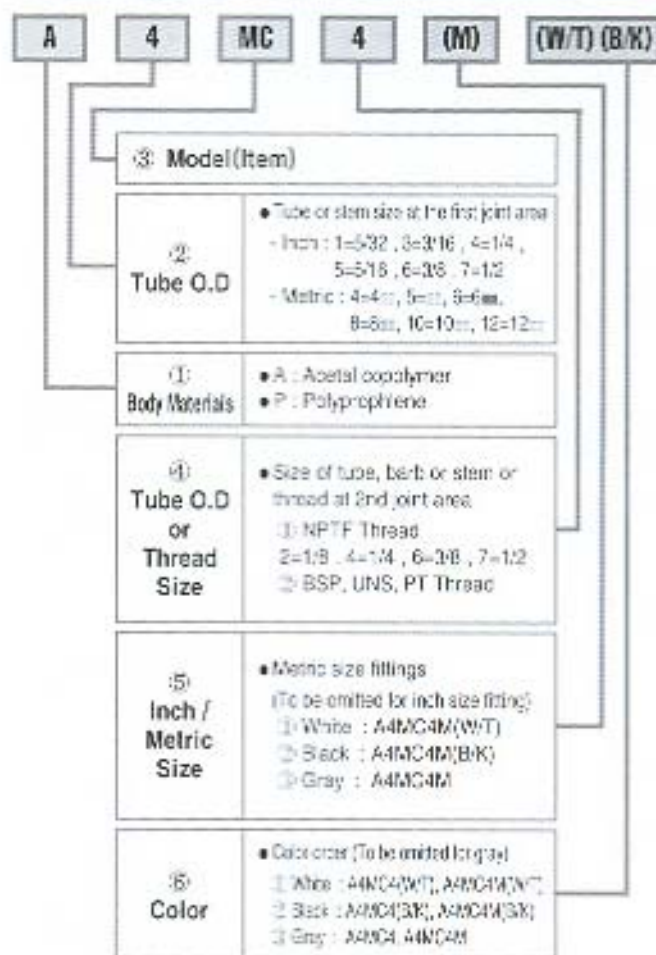
Threads	1/8", 1/4"	3/8", 1/2"
Maximum Torque	1.5 N · M 15kgf · cm	3.0 N · M 33kgf · cm

- The above value indicate maximum torque for plastic threaded DMfit.
- There may be slight difference in the field.

●Precautions

- Be careful and selective in using the fitting for other chemical liquids except water, food and beverage. Refer to the chemical properties or consult us if DMfit is to be used for chemicals.
- Do not apply serious vibration, rotation, body pulling, twisting, bending, shock and other load to the fittings. The fitting body may be damaged or collets may be dislocated.
- Before separating the fitting from the tube, check if the pressure is '0'. If excessive torque is applied to the fitting in order to separate the fitting from the tube, the tube may be damaged or any accident may occur.
- Tighten the screws at a proper torque. If the screws are tightened at an excess torque, the screw head may be damaged. If the torque is lower than required, the screw may be loosened and leakage may occur.
- If the barb connector is to be used, the use of clamp at the tube joint is recommended.

Order Information



SK 380-001



WATER
QUALITY
ASSOCIATION

®



DMfit® Push-in tube fittings

Since the inception in 1987, DMT Co., Ltd. has taken the leading position in the PC casing industry based on our quality-first spirit, credibility and technologies.

Now, DMT Co., Ltd. is making a second leap toward the fitting business. DMT Co., Ltd. will press toward a global leader, contributing to the food, automation, bio-engineering and home appliances industries.

Technical Information

Material Standards

Material	Fiting Color	O-ring
Acetal copolymer	White, Gray, Black	NSR
Polypropylene	White	NBR, EPDM

*The color of the collets may be selected from among white, red, blue, green, yellow, black, etc at no additional cost.

Fitting members and materials

• Fitting is broadly divided into body, collet and o-ring.

• Collets



Stainless steel Tech

- Material : Acetal copolymer or Polypropylene

• Cap



- Material : Acetal copolymer or Polypropylene

• O-Ring



- Material : Nitrile Rubber or EPDM

• Body



Assembled

Working

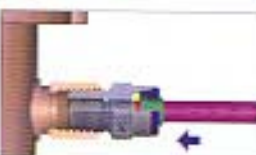


• Cut the front end of the tube vertically before inserting it.

• The outer surface of the tube into which it is inserted shall be smooth and clean, free from scratches.

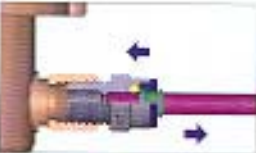


• Remove impurities from the thread and wrap it with teflon tape.



• Although there will be a feeling that the inserting is blocked before the tube stop is reached, insert it thoroughly to the tube stop.

• Use proper tools when tightening the screws.



• To insure the firm joint of the tube, try to pull out the tube at a suitable torque.

• Collets stainless steel teeth prevents the tube from being separated from the tube and o-ring prevents leakage.



• Remove any clearance between the body and collets and pull the tube to remove the fitting from the tube.

• The fitting are reusable.



• At this moment, the unique oval design of DMfit collets facilitates the work.



FDA approval :

DMfit fittings are produced in FDA approved materials.



SK Zert, NSF-51 Certifications :

DMfit fittings are suitable for contact with foodstuffs & drinking water.



ISO 9001 certification :

DMfit fittings are produced under ISO 9001 system.



LC-Locking Clip



- It ensures a firmer and more secure tightening.
- With its protrusion, attaching and detaching the clip are easy.
- As various colors are available, different colors may be designated for different purposes.



FBC-Flow Bend Clip



It holds the tube in place, preventing its separation and aligning it properly. When the tube should be bent, it maintains a smooth tube curve. Combined with bolts, FBCs may be fixed in, or on the wall of, a product.



TC-Tube Cutter

DM tube Cutter with quality blade is suitable for size up to 13mm plastic tubing.



■ Inch Size

PART NO.	Tube O.D.
A4LC	1/4
A5LC	5/16
A6LC	3/8
A7LC	1/2

■ Metric Size

PART NO.	Tube O.D. (mm)
A6LCM	6
A8LCM	8
A10LCM	10
A12LCM	12

■ Inch Size

PART NO.	Tube O.D.
A5FBC	5/16
A6FBC	3/8

■ Metric Size

PART NO.	Tube O.D. (mm)
A8FBCM	8
A10FBCM	10

PART NO.	Tube O.D.
TC	MAX. DIA 1/2 or 13mm